



Cultural route
of the Council of Europe
Itinéraire culturel
du Conseil de l'Europe



INFOFLASH 53

Belgian Luminism in the spotlight

Edmond Verstraeten exhibition in Schwaan (Germany)

April 1-June 17, 2023

Belgian Luminism is an original adaptation of the Impressionist concept of French origin. It exalts the clearest irradiations of light and the search for pictorial effects capable of restoring them... In 1904 most of the Belgian Impressionists presented themselves under the new banner of the Association "Vie et Lumière" around Emile Claus. The most active luminist focus was then in East Flanders, in the Ghent region as well as in the Lys valley, where Jean Delvin, Léon de Smet and Edmond Verstraeten stood out for the quality and variety of their works.

Edmond Verstraeten, born in 1870 is known as the "Master of Sombeke" where he lived in his domain in perfect harmony with nature. Impressionisms Routes© pays homage to him by presenting from March 12 to 26, 2023 its exhibition "*The Routes of Impressionisms in Europe*" which has met with significant success at the Château de Blauewendaal in Waasmunster (Belgium).

The Museum of Schwaan (Germany, Province of Mecklenburg-Western Pomerania) welcomes from April 1 to June 17, 2023 a large number of works by Edmond Verstraeten under the aegis of Impressionisms Routes©, Cultural Route of the Council of Europe and of the Euroart Association, our close partner. Many events will accompany this exhibition and in particular a conference by Antoon Rumes, grandson of the painter, on May 6, 2023.

The Schwaan Museum (Germany) and the Association of Friends of Edmond Verstraeten (Belgium) are active members of the European Network Impressionisms Routes©

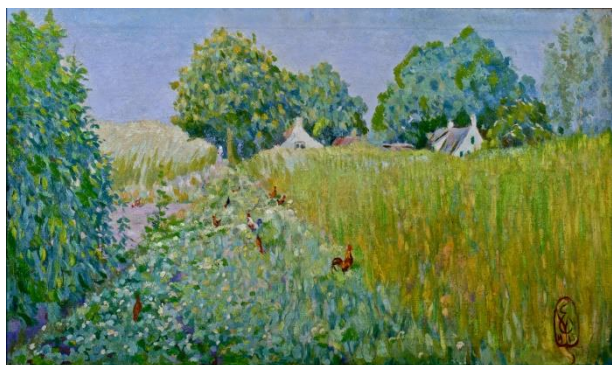
INFORMATIONS

Georges LUCENET
Vice-Président and General Manager
Impressionisms Routes©
luenet.georges@wanadoo.fr

Annette WINTER-SUESS
Head of the Kunstmuseum
Schwaan (Allemagne)
info@kunstmuseum-schwaan.de

IMPRESSIONISMS ROUTES
Cultural Itinerary of the Council of Europe
41 Boulevard Vital Bouhot
92200 NEUILLY-SUR-SEINE. FRANCE
www.impressionismsroutes.fr

Edmond Versraeten at Schwaan Kunstmuseum (Germany) April 1 - June 17, 2023



E. Verstraeten. Poulets et coqs dans les champs, 1925. Coll. Privée



E. Verstraeten. Ferme brûlée, 1951. Coll. Privée



E. Verstraeten. Agriculteur et sa herse, 1945. Collection privé



E. Verstraeten. Nuage sombre, 1955. Coll. privée



Schwaan, KunstMuseum



Kunstmuseum, Schwaan